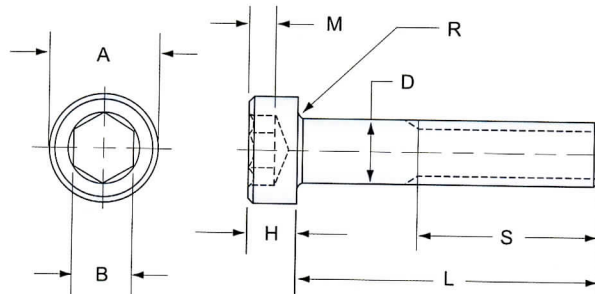


## DIN 7984 : Hexagon Socket Low Head Cap Screws



Dimensions (mm)

Nom. Size	A	H	D	B	M	S (L ≤ 125) min.	R min.	R. S. Torque (NM) 10.9
M3	5.32 - 5.50	1.86 - 2.00	2.86 - 3.00	2.020 - 2.080	1.38 - 1.62	12	0.10	1.15
M4	6.78 - 7.00	2.66 - 2.80	3.82 - 4.00	2.520 - 2.580	2.18 - 2.42	14	0.20	2.70
M5	8.28 - 8.50	3.32 - 3.50	4.82 - 5.00	3.020 - 3.080	2.58 - 2.82	16	0.20	5.40
M6	9.78 - 10.00	3.82 - 4.00	5.82 - 6.00	4.020 - 4.095	2.88 - 3.12	18	0.25	9.15
M8	12.73 - 13.00	4.82 - 5.00	7.78 - 8.00	5.020 - 5.140	3.65 - 3.95	22	0.40	22.0
M10	15.73 - 16.00	5.82 - 6.00	9.78 - 10.00	7.025 - 7.175	4.35 - 4.65	26	0.40	44.0
M12	17.73 - 18.00	6.78 - 7.00	11.73 - 12.00	8.025 - 8.175	4.85 - 5.15	30	0.60	77.0
M14	20.67 - 21.00	7.78 - 8.00	13.73 - 14.00	10.025 - 10.175	5.15 - 5.45	34	0.60	122
M16	23.67 - 24.00	8.78 - 9.00	15.73 - 16.00	12.032 - 12.212	5.35 - 5.65	38	0.60	190
M18	26.67 - 27.00	9.78 - 10.00	17.73 - 18.00	12.032 - 12.212	6.32 - 6.68	42	0.60	262
M20	29.67 - 30.00	10.73 - 11.00	19.67 - 20.00	14.032 - 14.212	7.32 - 7.68	46	0.80	371

Notes :

1. Thread Class : 6g for property class 10.9.
2. Length Tolerance : See Table 2, Page 7.
3. R. S. Torque = Recommended Seating Torque.
4. Working Temperature : -50°C ~ +300°C.

### Mechanical Properties

Property Class	10.9
Hardness ( HRC )	32-39
Tensile Strength ( Mpa )	832 min.
Decarburization and Carburization (See Page 17 )	E = 2/3H1

### Typical Application Fixture

Low head socket cap screws are designed to be used where clearance is an issue or the mating parts are too thin for a standard socket head cap screw.

Due to the head design these parts should not be used in critical applications where high tensile strength is required.

